



**COLONNA'S
SHIPYARD^{INC}**

THE WEST YARD

RAPID RESPONSE VESSEL SERVICE

FEATURING 1000 METRIC TON MARINE TRAVELIFT



OVERVIEW

Colonna's Shipyard expanded **West Yard Travelift Facility** is situated on ten acres adjacent to the main shipyard. It features a U.S. built 1,000 metric ton Marine Travelift and is designed as a *rapid response facility for immediate repairs.*

- Work stations for simultaneous repair of 15+ vessels
- Utility services for all shoreside demands
- Heavy lift crane and forklift capacity



Colonna's Shipyard Main Office

As the best-equipped yard in the mid-Atlantic, Colonna's Shipyard provides full service capability with special expertise in hull and machinery items including:

- Propulsion conversions and repairs
- State-of-the-art surface prep & coating
- Hull extensions and superstructure modifications
- Piping and electrical system renewals
- Heavy fabrication and large lathe capacity machine shop

www.colonnashipyard.com

ES PIER DATA

The West Yard Travelift Facility is configured with two concrete travelift slipway piers designated as Pier 8 and Pier 9 that also serve as lay berth piers with utilities and mobile crane service for in-water vessel repairs.

Pier 9 is slightly longer than Pier 8, a feature which allows the vessel operator to maneuver the vessel safely into the travelift slip. Inside width between piers is 62 feet.

	Pier 9	Pier 8
Length	320 feet	215 feet
Width	26 feet	26 feet
Water Depth	22 feet	22 feet
Fender system: vertical rubber extrusion	✓	✓
Utilities: fire main, freshwater, compressed air, electrical, sewage, oxy/propylene	✓	✓

ES ENVIRONMENTAL COMPLIANCE

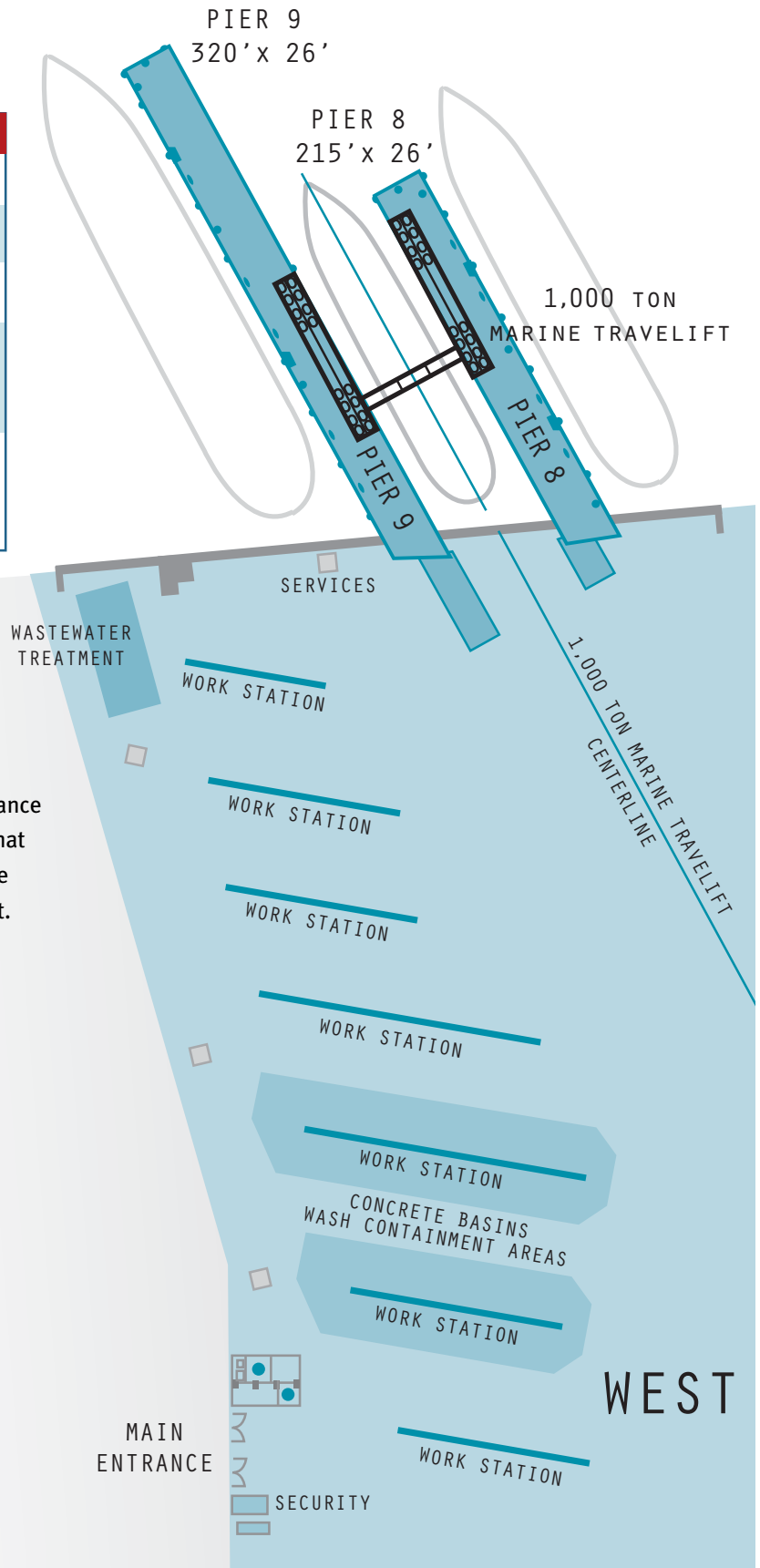
The facility is designed for high level environmental compliance with features such as a multi-stage water treatment plant that recycles all process water and a series of portable enclosure structures that provide weather protection and containment.

- *Contained hydroblast wash down stations*
- *Closed water collection and containment system*
- *Technically advanced process water treatment plant*
- *Environmentally compliant and permitted operation*



Hydroblast Equipment

ELIZABETH RIVER



CS TRAVELIFT SPECS

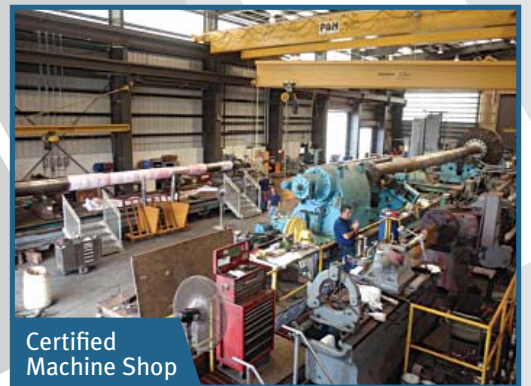
Manufacturer: Marine Travelift, Sturgeon Bay, WI, USA
Model: 1000-C
Number of slings: 4 sets, one fixed and three adjustable
Weight capacity: 1,000 metric tons
Inside beam: 60 feet



Heavy Fabrication Shop



Portable Enclosure Sections



Certified Machine Shop



YARD

WORK STATION

DRY DOCK NO. 1

DRY DOCK NO. 2

PESCARA CREEK



VESSEL REPAIR APPLICATIONS

The West Yard facility is designed to accommodate a variety of vessel designs with *rapid response and no wait service.*



Tugboats – inner harbor, coastal, pusher, offshore towing types

- complete overhaul and refit service
- propeller, shaft, and rudder repair
- raised wheelhouses designed, fabricated, installed
- custom fender and interconnection systems
- towing machine and capstan overhaul
- propulsion conversion and upgrade



Dinner and specialty cruise boats

- USCG inspection
- Periodic hull bottom maintenance
- Structural modifications and repairs
- Interior modifications and repairs
- Topside coatings



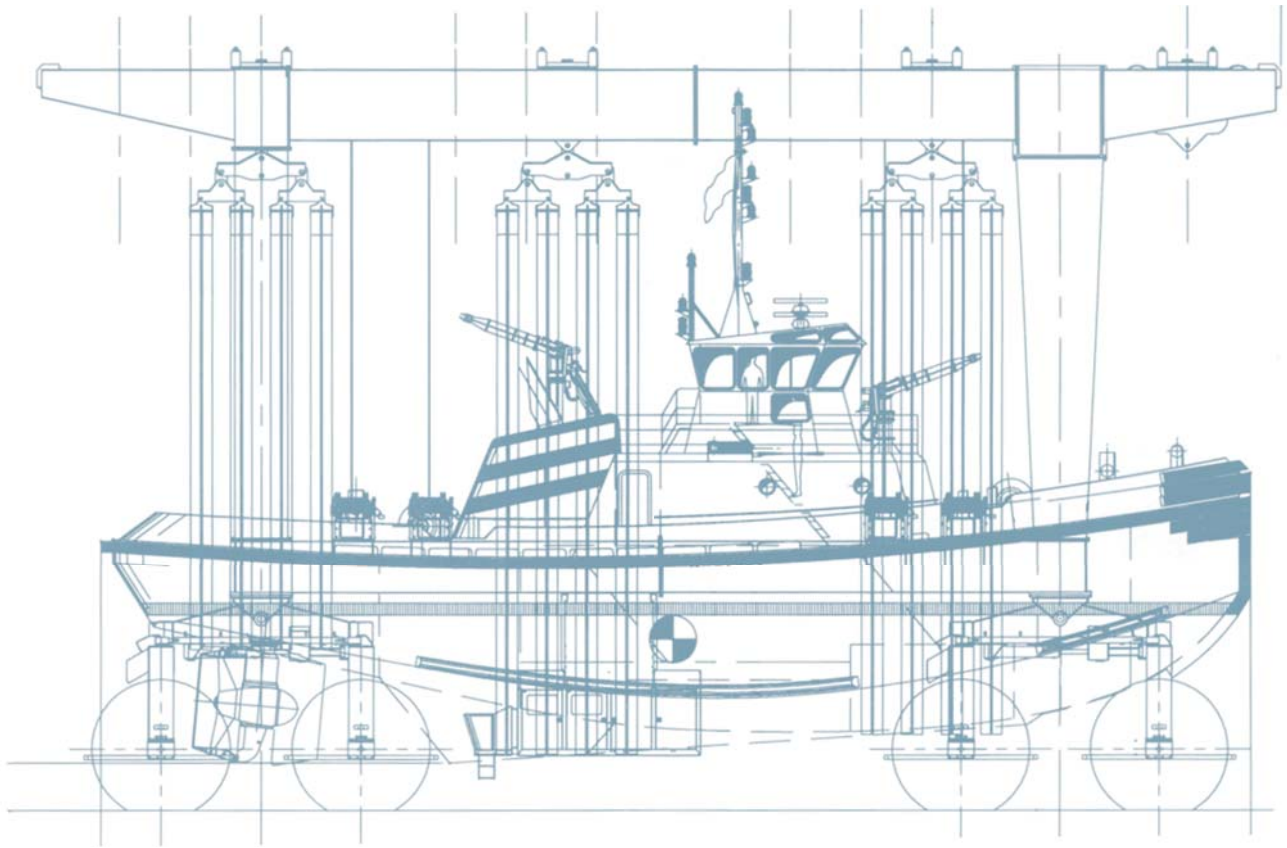
Barges – tank, bulk, hopper, and deck types

- I.T.B. connection systems
- Double hull conversions
- I.G.S. and closed loading systems
- Mid-body and sponson modifications
- Pipe and plate repairs



Megayachts and deep draft sailing yachts

- Classification surveys
- Main engine and generator repower
- Topside painting
- Rigging inspections
- Hull and superstructure modifications



400 East Indian River Road
Norfolk, Virginia 23523
Phone 1.757.545.2414
TOLL FREE 1.800.265.6627
colonna@colonnaship.com
www.colonnashipyard.com

LAT: 36.50.05 LONG: 76.16.20

THE COLONNA'S FAMILY OF AFFILIATES



COLONNA
DOWN RIVER
DIVISION

